



HUMANA PEOPLE TO PEOPLE

SOUTH AFRICA

2017 Progress Report

Food Security



Community Development



Education



Health

“Promoting the humanization of mankind, the only art form that contains the seeds to the flowers of happiness for all.”

The Humana People to People Charter

TABLE OF CONTENTS

Mission Statement	4
Welcome Message from the Chairperson	5
About Humana People to People South Africa	6
TCE - Total Control of the Epidemic	7
Community Based Counselling and Testing Program.....	8
HIV Testing and Counselling of Orphans and Vulnerable Children	9
TCE DREAMS - Reaching Adolescent Girls and Young Women and their male partners	10
HOPE Humana	12
HIV Mobilization, Education and Linkage to Care in Limpopo, Mpumalanga and Kwazulu-Natal	13
HOPE Humana in Westrand Sex Worker Program.....	14
Humana People to People South Africa in active support of the 90-90-90 Strategy by 2020	15
Humana People to People South Africa in 2017	16
Child Aid - Broad Community Development	18
Child Aid Bakenberg in Waterberg, Limpopo	19
Child Aid Doornkop in Soweto, Gauteng	20
Child Aid Abaqulusi in Zululand, Kwazulu-Natal	21
Elimination of Malaria in Mpumalanga and Limpopo	22
Rise Young Women and Girls Program	23
Preschools of the Future (POF)	25
Farmers' Clubs	27
Presenting our Partners	29
Financial and Legal Information	30
Project Contacts	31



VISION

It is about fostering new generations with golden hearts and heads and hands, well-educated and with a personal ethic of such proportions that humanized relationships of all sizes can serve as substitutes for all sorts of dehumanized phenomena.

MISSION STATEMENT

We look upon South Africa as a country with great resources in its people, its culture and its nature.

We look upon South Africa as a country, which plays an important role on the African continent and in the world.

We also look upon South Africa as a country with great challenges to be addressed in order to create a society where all people can fulfil their dreams and develop their potential.

Only by a collective effort these challenges can be overcome.

In the spirit of Solidary Humanism we will:

- Train and empower communities to take total control of the HIV, TB and Malaria epidemics and mitigate their impact.
- Educate, nurture and inspire children to become active and responsible members of society.
- Equip individuals and families to meet their economic needs through skills training and income generating activities.
- Empower youths and adults with professional and life skills to play their part in development.
- Promote, advocate for and support volunteerism as an integrated part of creating development that benefits both the volunteers and the communities they work with.
- Practise and promote non-discrimination, global understanding and co-operation and contribute to creating equal opportunities for everyone.
- Deliver relief, care and support to vulnerable groups.
- Co-operate with other organizations, government departments and local structures to strengthen the common impact.



MESSAGE FROM CHAIRPERSON

“The big majority of our work continues to focus on HIV and TB, and in 2017 we also expanded our work to eliminate malaria.”



Lone Torbensen
Chairperson

To our Partners, Friends, Colleagues and Stakeholders.

2017 has seen big progress in Humana People to People South Africa's work.

Humana People to People in South Africa is a proud partner of the South African government, and we join hands with both South African and international partners to achieve sustainable development goals for humankind. It is the collective effort, the standing shoulder to shoulder with those most in need of development, that makes the difference.

In 2017, we have reached out to more than 500,000 people in Gauteng, Limpopo, Kwazulu-Natal, Mpumalanga, North West and Eastern Cape in the area of health, education, food security and skills training.

The big majority of our work continues to focus on big epidemics (HIV/AIDS, TB), and in 2017 we have expanded our work to eliminate malaria. New progress has been made to overcome the burden of these diseases, but still much has to be done to raise awareness and knowledge, to fight stigma and discrimination and to make sure that people actually benefit from the health services and that they are made accessible to them.

However, we conduct other programs addressing some of the most pressing challenges faced by the Poor in South Africa, such as unemployment, food security, abuse and lack of education. We aim to have an integrated and holistic approach to development as a must to achieve sustainable results.

In this report we wish to give a short insight into our projects and the results that were achieved. Many are the daily actions to achieve these results which all aim to make a better life for those most in need. Many kilometres have been walked, many dialogues and teaching lessons conducted, many meetings held to secure progress, and not at least many concrete acts of care and solidarity were done.

We wish to thank all the volunteers, staff, partners, stakeholders and the Government of South Africa for a fruitful year, and we look forward to strengthening the cooperation in 2018.

ABOUT HUMANA PEOPLE TO PEOPLE SOUTH AFRICA

Humana People to People in South Africa (HPPSA) was established in 1995 with the goal to respond to the socio-economic needs of the underprivileged communities. HPPSA is a member of the Federation of Associations Connected to the International Humana People to People Movement. Its first project in South Africa was established in Soweto in 1998 in cooperation with the local government.

HPPSA has aligned itself with the Sustainable Development Goals and South Africa's National Development Plan 2030. We place ourselves in the middle of the arena together with the people, government, business and civil society to strive for these goals.

At present, we run the following community development programs that address the challenges which especially the Poor are facing:

Health – HIV, AIDS, TB and Malaria

- We work to empower communities afflicted by HIV & AIDS and TB to confront and overcome the effects of these epidemics.
- We conduct community based HIV testing mass actions and linkage to care and treatment.
- We educate pregnant women and their families about the Prevention of Mother to Child Transmission (PMTCT) and link them to ANC and PMTCT services.
- We work with young girls and women and their male sex partners to reduce the burden of HIV and AIDS.
- We conduct campaigns to eliminate malaria in border areas.

Community Development – Child Aid

- We protect children and their rights.
- We work with poor families and communities to overcome burdens of poverty a broad in approach to the developmental challenges which communities are facing. We train and work side by side with young people to build their resilience.
- We work with other stakeholders to secure that programs are coordinated and efficient.

Food Security – Farmers' Clubs

- We support small-scale farmers to work collectively for their improved income and well-being.
- We train farmers in low cost organic farming methods alongside better water usage and market linkage to overcome the challenge of climate change and economic hardship.
- We support gender equality by equipping women farmers with the skills and opportunities they need to become socially and economically independent..

Education - Pre-schools of the Future (POF):

- We facilitate child centered pre-school teacher training and establishment of ECD centers in rural communities in Kwazulu-Natal.
- We create activities for disadvantaged children out of school to support them and build their personal and social skills.

PROVINCES OF OPERATION IN 2017

1. Gauteng Province
2. Limpopo
3. Kwazulu-Natal
4. Mpumalanga
5. Eastern Cape
6. Free State

TOTAL CONTROL OF THE EPIDEMIC - TCE



Total Control of the Epidemic, widely known as TCE, is a systematic community mobilisation drive to secure people take control of HIV & AIDS and TB. Today, the world is aiming at 90-90-90 as a way to get in control: 90% of HIV positive must know their HIV status, 90% of those who are HIV positive must receive treatment, and 90% of those on HIV treatment must have a good viral suppression. TCE works in support of these goals.

Humana People to People believes that “Only the people can liberate themselves from the Epidemic”, and with that ethos local people are employed and trained to work as Field Officers in each TCE Area forming the backbone of a movement, reaching out to those individuals who are found to be most vulnerable to HIV and TB, and educate and counsel and provide HTS, so that they take a stand in their own life, but also become active Passionates among their peers.

The Field Officers, supported by professional nurses, provide the counselling and testing close to where people stay and work and offer TB and STI screening and screening for non-communicable diseases. People who test HIV positive, or who have symptoms of TB, STI’s and other diseases are linked to care and treatment, and TCE also works with communities and health facilities to support the people to adhere to their treatment.

In 2017, Humana People to People South Africa had the following TCE programs funded by USAID through FHI360 and Foundation for Professional Development (FPD) as prime recipients and German Government through the National Department of Health and FPD as Prime partner.:

- *TCE Community-Based HIV Counselling and Testing (CBCT)
- *TCE Reaching out to orphans and vulnerable children and

their families.

*TCE DREAMS, reaching out to adolescent girls and young women and their male partners.

The TCE programme was active in 6 provinces; Limpopo, Eastern Cape, Mpumalanga, Gauteng, Free State and Kwa-zulu-Natal reaching over 574,000 people with HIV testing services in these three programs.



COMMUNITY BASED COUNSELLING AND TESTING PROGRAMME



The program was implemented in the Eastern Cape (Buffalo City, Nelson Mandela Bay, OR Tambo), Mpumalanga (Govan Mbeki, Lekwa, Msukaligwa and Mkhondo), Kwazulu-Natal (Ethekewini) and Limpopo (Mopani).

Part of the program was under the USAID funded Communities Forward program, and another part was under the National Department of Health with funds from German Development Bank. Both programs were managed by Foundation of Professional Development with Humana People to People South Africa as a sub-recipient.

TCE worked in close collaboration with the public health services which appreciated this much needed addition to their work load and could report significant improved results.

In order to reach the most vulnerable population, TCE made use of four modalities:

- Home based testing through door-to-door campaigns in specific areas,

TCE CBCT PROGRAM

200,000 people
Counselled and Tested for HIV

71%

Linkage to Care and Treatment

“ South Africa has the biggest HIV epidemic in the world, with an estimated 7.1 million people living with HIV in 2016. South Africa accounts for a third of all new HIV infections in southern Africa. In 2016, there were 270,000 new HIV infections and 110,000 South Africans died from AIDS-related illnesses. ”

which were expected to have many HIV positive, this modality had the highest numbers.

- Mobile counseling and testing through creating testing focal points in e.g. taxi ranks.
- Work place program, with good collaboration of employers in the target areas.
- Patient Index trailing, testing which was done in close cooperation with health facilities and patients.
- Twilight, working after hours to especially reach key populations such as sex workers and men having sex with men.

The targets for the two programs were slightly different and can therefore not be 100% compared. But in general it can be said that all in all more than 200,000 people were counseled and tested in 2017. The programs had between 9% (CBCT) and 6% (CBHCT) positivity rates and referrals and linkage to care was around 71 % successful in one of the programs. All who were tested for HIV were also screened for TB and non-communicable diseases.

HIV TESTING OF ORPHANS AND VULNERABLE CHILDREN AND THEIR FAMILIES



Humana People to People South Africa received USAID funding from FHI360 to implement the Supportive Referral Initiative (SRI OVC Beneficiaries) program in May of 2016. The program was envisaged as an 18 months' campaign to reach out to orphans and vulnerable children, care workers and the OVC family members in seven provinces. The program was conducted in partnership with a number of other USAID partners, who had cared for these children over a number of years. HPPSA's responsibility was to make sure the children were tested for HIV and referred to care and treatment if HIV positive.

After some start-up challenges, the program was reduced to less than a year and some of the USAID partners had to withdraw as they were not ready for the program. During the last 4 months, the program was on better track, and the cooperation with the remaining OVC partners became more efficient to the benefit of the many children and their families.

TCE OVC PROGRAM

63,317 people

Counselled and Tested for HIV (46,854 Children, 10,764 Family Members and 5,698 Primary Caregivers)

“

In 2016, an estimated 320,000 children (aged 0 to 14) were living with HIV in South Africa, only 55% of whom were on treatment.

”

All in all, Field Officers supported by nurses tested 63,317 persons, of which 46,854 were children (74%), 10,764 family members (17%) and 5,698 primary caregivers (9%). The children (18 months to 18 years) had an average positive rate of 1%, the family members 8% and the primary caregivers 6%. All individuals who tested HIV positive were referred to health facilities for care and treatment.

Some of the lessons learned were:

Door to door testing was better for OVC testing than mobile.

Weekly review meetings between HPPSA and OVC partners and coordination meetings with local CBOs were helpful in discussing challenges and solutions in order to facilitate the effectiveness of the program.

Building and maintaining good relations with stakeholders makes the implementation of the program more efficient. HPPSA built and maintained a good relationship with clinic management and the District Department of Health.

TCE DREAMS - TARGETING YOUNG WOMEN AND THEIR MALE PARTNERS



The program started in 2016 and ended September 2017 with the following objectives:

To provide HIV testing services (HTS)
To strengthen referrals and linkages through a continuum of care for beneficiaries.

The program especially targeted adolescent girls and young women (from 10 to 24 years) and their male sex partners. It was implemented in 3 areas of eThekweni and in Umkhanyakude (Hlabisa and Mtubatuba).

The program was planned for 18 months and had an overall target of 260,000 persons reached with HIV testing services. Of these 85% should be male sex partners.

Due to more than 14 years' experience in mass HIV campaigns, HPPSA was able to within three months establish the necessary structures and capacities to roll out the program. The program had 4 TCE divisions with each 35 TCE Field Officers and 3 nurses. During the last part of the program the number of staff was increased to reach the target.

TCE DREAMS PROGRAM

271,756 people
Counselled and Tested for HIV

71%

Linkage to Care and Treatment

“ HIV prevalence among young women in South Africa is nearly four times greater than that of men their age. Young women between the ages of 15 and 24 years made up 37% of new infections in South Africa in 2016. ”

In order to ensure ownership, sustainability and strong linkages and referrals, HPPSA worked with existing community structures such as Operation Sukhuma Sakhe, DAC – District AIDS Councils, LAC – Local AIDS Councils, the District Nerve Center, and health facilities within the districts.

All in all, 271,756 persons were tested, of which 76% were men, 20% young women (20-24 years) and 4% girls (10-19 years). The positivity rate was highest among the older men, (>35 years), 6.8% followed by the young women at 6%.

Besides HTS, Field Officers provided a continuum of health screening services that included TB, STI's, cancer (Cervical, Breast, and Prostate), VMMC, asthma, diabetes, and High blood pressure. Those found with one or more symptoms including those with alcohol and drug abuse were referred for further diagnosis and care at health facilities and other government services.



A TCE FIELD OFFICER'S STORY

Most newly formed informal settlements in the Buffalo City Metro do not have clinics, making it difficult for these communities to have access to health care. The Community Based Counselling and Testing Program through door to door is a great initiative, because we give the community an opportunity to gain knowledge through our health education and know their status through Counselling and Testing.

While I was doing door to door at NU1 Mdantsane Squatter Camps, I met a 13-year-old girl who was interested in knowing her HIV status. I went inside her home where I found her mother and grandmother. They did not want to give permission to the child to test.

After the whole incident, I started to worry about that little girl because deep down I knew that she had a right to know her status.

Teenagers are at high risk of getting infected, because they are sexually active and do not have the correct information about HIV prevention. Few days later we went back to the house and luckily the mother was home alone. We talked to her for some time until I noticed that she was crying and she started to open up to me.

She was HIV positive, and she knew that when she was gave birth to her daughter. She also told me that she and the daughter were on treatment, but the child believes that she has a heart problem and that is why she is taking medication.

The problem now is that the child is getting older and starting to question why the mother is refusing her to test for HIV. We agreed that it would be better that the mother told her the truth, and that I then would come back to make the test.

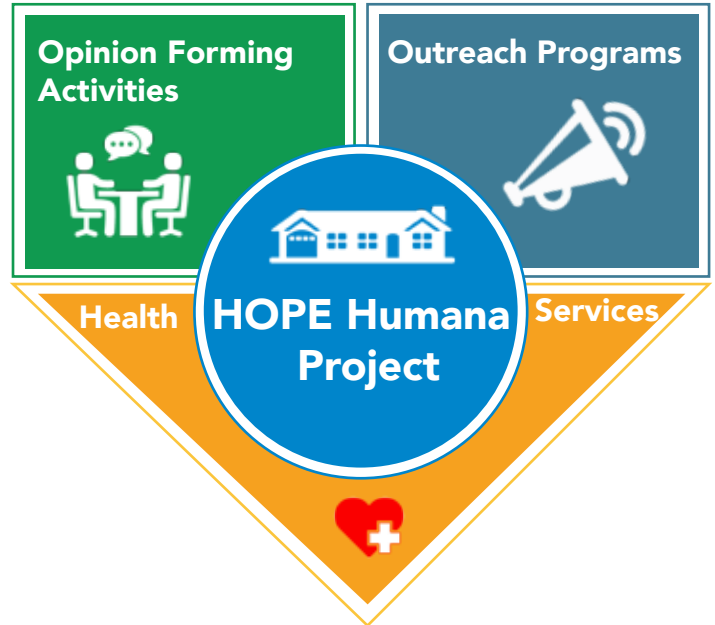
Through TCE, we overcome the lack of knowledge in communities by doing mobile and door to door campaigns, where we engage with parents to make it easier for them to be open and educate their children.

Now many parents come to us and ask for our services. More people know their status and those who are HIV positive are linked to care and treatment.

HOPE HUMANA



There are 6 HOPE projects, two in Kwazulu-Natal (uPhongolo, Abaqulusi), one in Limpopo (Mopani), two in Mpumalanga (Bushbuckridge, Chief Albert Luthuli) and one in Gauteng (Westrand)



HOPE Humana is a project aiming to reduce the spread of HIV and TB and related ailments and to offer care and support to those affected. The project plays an important role in reigniting the quality of life where human dignity has been thwarted, bringing hope, standing in solidarity with the infected and the affected.

HOPE operates within a framework of 3 Lines of Activities:

Outreach Programs: HOPE projects seek to create alliances and synergies in continuous mobilisation of people to adapt safer sexual behaviour, and to be part of the community's response to HIV, TB and other related diseases. The Outreach Program reaches out to children, youths and adults in schools, workplaces, townships and rural communities, and organizes the people in clubs with trained Peer Educators and Peer Counsellors.

Opinion Forming Activities: Opinion Forming Activities seek to influence and involve decision makers and local leaders to support the project in the fight against HIV/AIDS. This is done through community dialogues, identifying role models, inviting prominent persons, company directors and local politicians to be guest speakers.

Health Services: HOPE Centres give health services, referrals to clinics, offer adherence support and advice on sexually transmitted diseases to communities. HOPE projects have mobile units that move around mobilizing and referring for HIV testing. HOPE works with clinics to start Support Groups and Trios for people living with HIV/AIDS, forms Positive Living Clubs and nutrition gardens.



HIV MOBILIZATION, EDUCATION AND LINKAGE TO CARE IN LIMPOPO, MPUMALANGA AND KWAZULU-NATAL

With support from among others the National Department of Health and HCI Foundation, the three HOPE Humana projects in Limpopo, Mpumalanga and Kwazulu-Natal continued to contribute vital mobilisation, education and other services to all in all 105,000 people in the three districts.

Here a very short description of some of the results:

Health Services

- Mobilized and referred 16,211 people for Health Testing Services (HTS).
- Conducted 57 Prevention of Mother to Child Transmission (PMTCT) campaigns with the participation of 1 251 women in the community.
- Provided Psycho-Social Support to 357 people hereunder to Orphans and Vulnerable Children.
- Mobilized 10,101 men for Medical Male Circumcision (MMC) and out of the mobilised 1438 men went for circumcision at local clinics and hospitals.
- Screened 18,345 people for TB.
- Tracked 383 TB and ART defaulters and referred them to local clinics to re-start their treatment.
- Reached 36,746 people with information on non-communicable diseases.

Opinion Forming Activities

Held 67 Opinion Forming Activities through meetings with participation of 2,350 people. Opinion forming activities mainly focused on the following issues;

- Gender Based Violent (GBV).
- Prevention of Mother to Child Transmission (PMTCT).
- Teenage Pregnancy.
- Alcohol Abuse.
- HIV-related stigma and discrimination.
- HIV Treatment and Prevention methods.
- Myths and misconceptions about the female condoms.
- Pre-Exposure Prophylaxis.

HOPE mobilized and educated the communities during public events to reduce HIV-related stigma and assisted communities in protecting people with HIV from violence, retaliation and discrimination and held campaigns against Sexual and Gender Based Violence reaching 1,781 people. Through the follow up system on suspected cases on Gender Based Violence, 14 cases were referred to the Child Line Organisation.

Project volunteers played a prominent role in distributing condoms to the community. As a result of the campaigns and lessons given there has been a change of people's opinions and perceptions towards the use of condoms and also understanding on the importance of Family Planning.

Outreach Programme

Support Group members were in the forefront of maintaining nutrition gardens as well as organizing their monthly meetings where they share their experiences on how to run Income Generating Activities, identifying problems and solving them as a team.

- Reached out to 14,665 Youths. During the school program HOPE Humana provided lessons on Teenage Pregnancy, Substance Abuse, Gender based Violence, Medical Male Circumcision (MMC), HIV and AIDS, TB to youths and children.
- Identified 821 orphans and vulnerable children (OVCs). From the 821 OVC's, 107 were assisted on getting social grants, 128 referred for foster grants, 98 referred to Home Affairs for identity cards and birth certificates, 88 received food parcels and 405 were provided psycho-social support as well as assisted with their home work after school hours.
- Established 44 Support Groups with a membership of 1,632 people of which 1,194 were women and 438 were men. The groups play a prominent role in educating people about ART and TB medication and the importance of adhering to their medication.

HOPE PROGRAMS

116,342 people
Reached

3,730,226 condoms
Distributed

16,211 people
Referred for HIV Testing Services

10,101 people
Referred for Voluntary Male Medical Circumcision

“

Increasing the acceptance of HIV as a community issue also mobilizes community members to respond to HIV/AIDS. Community mobilization in itself is an important HIV/AIDS intervention.

- World Health Organization

”

HOPE HUMANA, WESTRAND SEX WORKER PROGRAM



The program is currently running in Mogaale Sub-District Municipality; Krugersdorp, Magaliesburg & Kagiso with funds from the Global Fund and primed by NACOSA. The activities were aligned to the Global Fund Program, which provided the funding aiming to: reduce social and structural barriers to HIV/AIDS, STIs and TB prevention, care and impact among sex workers; reduce sexual transmission of HIV/AIDS among sex workers and their clients and sexual partners by at least 50% using a combination of HIV/AIDS and TB prevention approaches and social support services; and to sustain sex workers' health and wellness.

The program targeted street based, home-based, independent and owned sex workers. HPPSA staff and volunteers have gone into brothels and hotels identified as 'hotspots' to reach sex workers with health services including HIV Testing Services (HTS), provision of Pre-Exposure Prophylaxis (PrEP), Provision of Post Exposure Prophylaxis (PEP). They have promoted HIV prevention; encouraged sex workers to voluntarily receive HIV testing services in order for them to know their HIV status and to enable them to consider seeking alternative livelihood options and to restoring their confidence and dignity. 2,539 sex workers were reached in 2017.

SEX WORKER PROGRAM

2,539 sex workers

Reached

837,133 condoms

Distributed

12 Creative Space Workshops

Conducted

25 Small Group Workshops

Conducted

324 sex workers

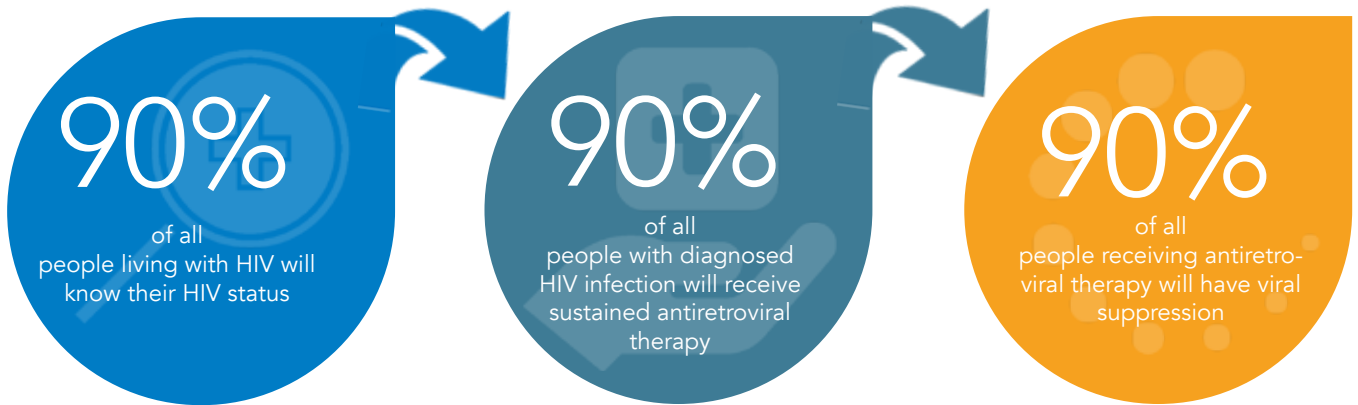
Know their HIV status

“

Nationally, HIV prevalence among sex workers is estimated at 57.7%. In 2015, it was found that only 19% of female sex workers living with HIV in Johannesburg were accessing treatment.

”

HUMANA PEOPLE TO PEOPLE SOUTH AFRICA IN ACTIVE SUPPORT OF THE 90-90-90 STRATEGY BY 2020



“ TCE contributes to reduce HIV incidence by linking key populations and high incident communities to HIV and TB prevention, care and support services. ”

“ HOPE Humana is a project aiming to reduce the spread of HIV and TB and related ailments and to offer care and support to those affected. ”

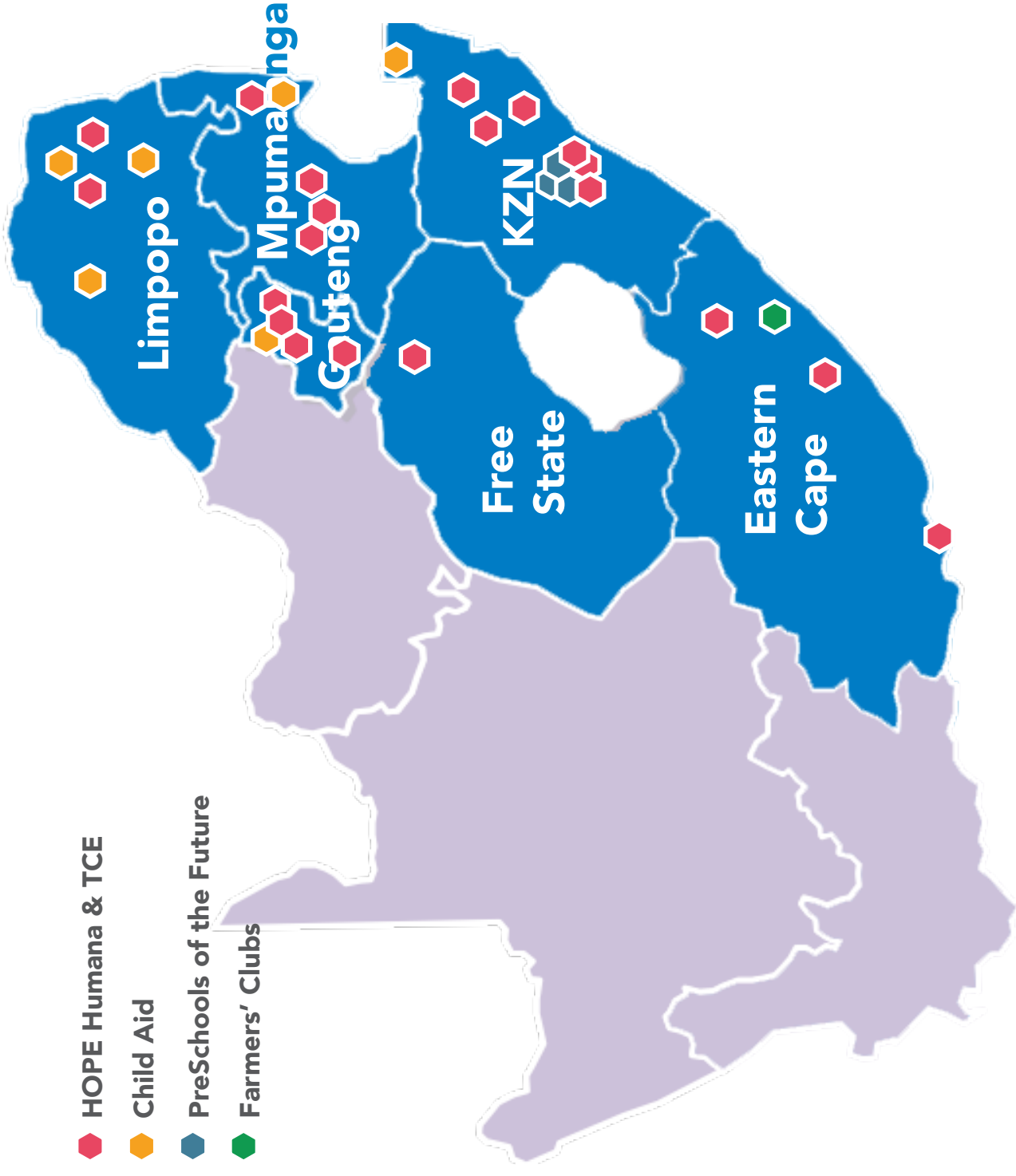


HUMANA PEOPLE TO PEOPLE SOUTH AFRICA PROGRAMS, PROJECTS, PEOPLE IN 2017

Working Towards Sustainable Development Goals



- ◆ HOPE Humana & TCE
- ◆ Child Aid
- ◆ PreSchools of the Future
- ◆ Farmers' Clubs



“Humana People to People South Africa continues to align its activities with the United Nations Agenda 2030 Sustainable Development Goals, working in partnership with governments, foundations, multi-lateral agencies and private business.”



Community Development

- Child Aid Abaqulusi
- Child Aid Bakenberg
- Child Aid Doornkop
- Child Aid Ehlanzeni
- Child Aid Mkhanyakude
- Child Aid Mopani Vhembe Capricorn



Education

- PreSchools of the Future Mangangeni
- PreSchools of the Future Maphumulo
- PreSchools of the Future Ndwendwe



Food Security

Farmers' Clubs Elliotdale



Health

- HOPE Abaqulusi
- HOPE Mopani
- HOPE Bushbuckridge
- HOPE Chief Albert Luthuli
- HOPE Uphongola
- HOPE West Rand
- TCE Buffalo City
- TCE City of Johannesburg
- TCE City of Tswane
- TCE eThekweni
- TCE Gert Sibande 1

- TCE Gert Sibande 2
- TCE Mopani
- TCE Nelspruit
- TCE OR Tambo
- TCE Pietermaritzburg
- TCE DREAMS 1
- TCE DREAMS 2
- TCE DREAMS 3
- TCE DREAMS 4
- TCE DREAMS 5
- TCE DREAMS 6



Food Security



Community Development



Health



Education

CHILD AID - BROAD COMMUNITY DEVELOPMENT



In support of the government initiatives to alleviate the plight of women and children, Humana People to People South Africa has been implementing the Child Aid Program since 1998 with the aim of securing a safe and nourishing childhood for children in disadvantaged communities.

The Child Aid Program is typically implemented through 10 lines of development identified by local needs and targeting 3,000 families. Each project is implemented by an experienced project team and work closely with local committees and in partnership with other civic organisations. The projects are currently being implemented in the four (4) provinces of Gauteng, Limpopo, Mpumalanga, and Kwa-zulu Natal.

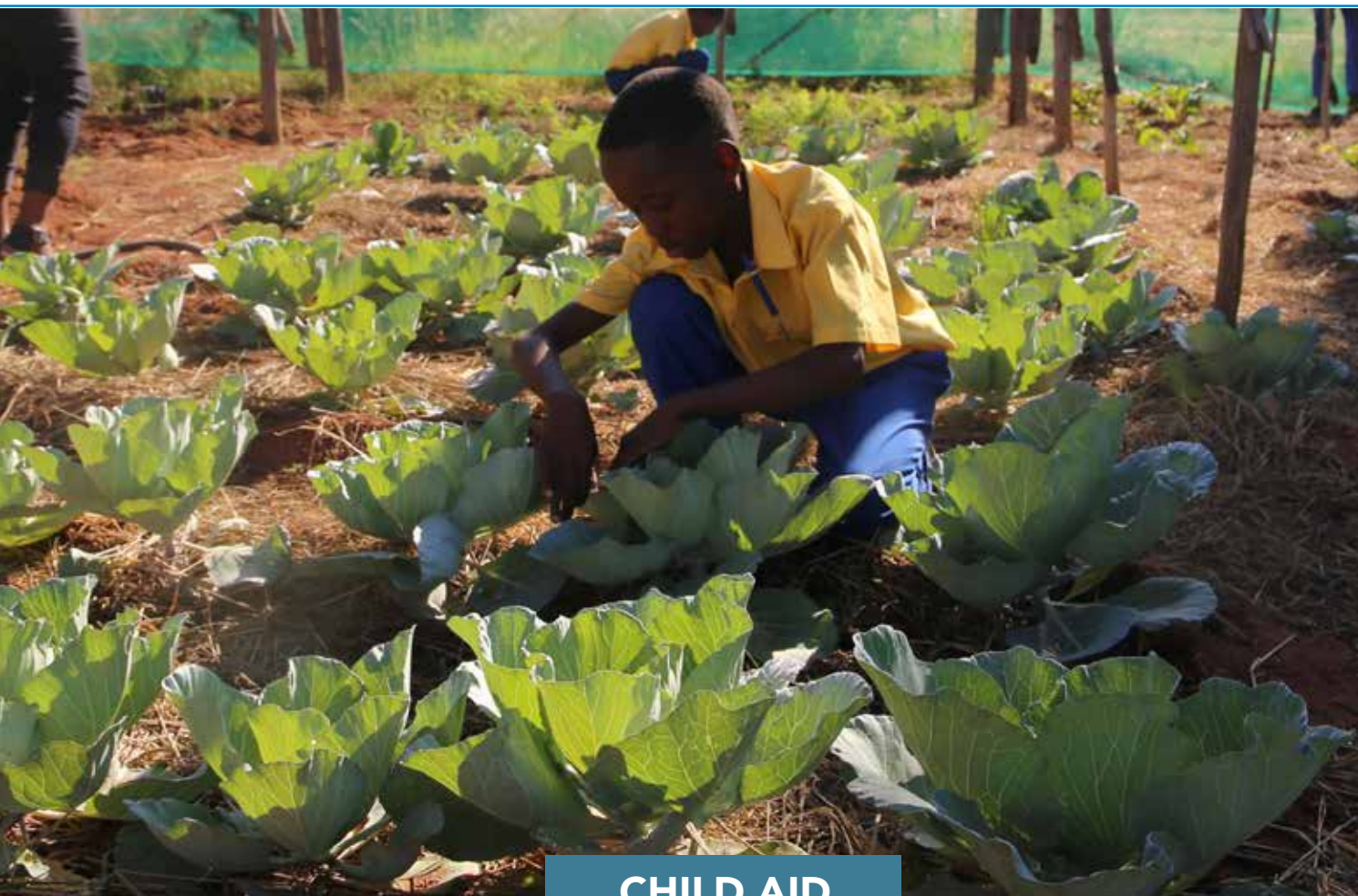
CHILD AID TUBATSE – IN SEKHUKHUNE, LIMPOPO

Supported by Global Fund, City of Vienna and partners of the HPP Federation, Child Aid Tubatse operates in Ribacross outside Burgersfort. It was established in 2006 and one of its main achievements was the building of a big community center (2014), which is now housing community events, training and pre-school activities.

The Project Leader is a member of the Local AIDS Council and attended the capacity building workshop, where all stakeholders were present and the policy framework for HIV and AIDS was discussed.

The programme followed all the 10 lines of the Child Aid Program. Notable achievements include training of 27 young men and women in sewing; training of 33 youths in computer information technology; and training of 51 club leaders in issues of agriculture and the climate. Youths were also trained in life-skills in addition to preparing for the formal job market. The project also assisted 76 OVCs with sanitary pads. Over 1,300 in-school youths were reached through the Soul Buddyz program (see article). Overall, the project impacted on a significant number of children and youths with various programmes and activities.

CHILD AID BAKENBERG - WATERBERG, LIMPOPO



Child Aid Bakenberg was initiated in the Waterberg District of Limpopo Province in 2006 through a partnership with the National and Limpopo Department of Health.

One of the current bigger programs of the project is the home based care program with 39 employed home based carers and a number of volunteers. 526 registered patients were cared for, of which 193 suffered from hypertension, 76 diabetes, 15 stroke and cancer, 59 people were living with HIV/AIDS and 29 TB dot patients, 79 had a mental condition, 5 needed wound care and 82 patients were on other chronic conditions including arthritis, epilepsy, asthma and disabled.

Another significant achievement in 2017 was the pre-school program which reached out to 19 pre-schools and 1,008 children. Child Aid used the POF training manual to support the pre-schools (see article on Pre-schools Of the Future).

The project also supported 1,003 youths, 564 girls and 439 boys. Staff and volunteers ran clubs with sports and life skills training and also linked the youths to

CHILD AID BAKENBERG

526 patients
Cared for

1,008 children
Reached in Preschools

1,003 youth
Supported

SNAPSHOTS

- Taking care of the sick in the community through the Home Based Care program
- Starting back yard gardens in the community for income generation and for nutrition
- Facilitate the improvement of services for children specifically, Orphans and Vulnerable Children
- Supporting preschool children

various government schemes such as National Youth Development Agency and government departments offering career opportunities.

The project also offered support to 100 OVC's and their families.



CHILD AID DOORKOP - SOWETO, GAUTENG

Child Aid Doornkop is Humana People to People South Africa's oldest project going back to 1998. It was established in partnership with the Department of Social Development in Gauteng and has continued to serve the communities of Doornkop throughout 20 years with the 10 lines of Child Aid involving children, youth, families and stakeholders.

The project attained significant achievements in 2017. Among the results can be mentioned: Trainings on income generating activities, and participants were able to sell their products during organized events.

Health campaigns were conducted on health and environmental protection issues reaching 16,441 people.

16,641 people were mobilized for HIV Testing Services and 1,409 people were tested, among those 1,252 children.

Establishment of 191 community gardens.

300 youths received life skills and entrepreneurial skills training.

1,920 kids in 20 satellites pre-schools and the project's own pre-school continued to benefit from a variety of activities and awareness campaigns.

390 orphans and vulnerable children participated in events held by Child Aid, received support from volunteers and those in need linked to Government Services for assistance.



SNAPSHOTS

1. Providing skills training to the community at various levels:
 - Computer skills
 - Financial management
 - Beading
2. Implementing Health, Hygiene and HIV and AIDS information campaigns.
3. Distributing healthy and nutritious diet supplied by Department of Social Development.
4. Cleaning the wetlands and sharing information with the community about the importance of recycling and Global Warming

CHILD AID DOORKOP

17,631 people

Reached

390 OVCs

Assisted

191 gardens

Established

300 youths

Trained

20 pre-schools

Supported



CHILD AID ABAQULUSI - ZULULAND, KWAZULU-NATAL

Child Aid Abaqulusi is a project established in 2016 in partnership with the Nelson Mandela's Children's Fund with the aim of improving the health status of children by involving the community and supporting pregnant mothers before the child is born.

The project works to improve the health status of children in rural communities of Abaqulusi Local Municipality (Abaqulusi) which are highly affected by HIV/AIDS – by applying integrated community development strategies to empower families and their communities to nurture local children.

Some of the main achievements in 2017 were:
Introduced Malnutrition Task Teams in the municipality which are participating in networking meetings as a way of improving the District Maternal and Child Health & HIV/AIDS eradication program.

494 learners received educational awareness campaigns on teenage pregnancy, child abuse, HIV/AIDS, TB, STIs and family planning.

Facilitated that 1, 277 children from 0-5 years were immunised by Department of Health (DOH) in crèches and community halls.



“

Maternal and child health issues remain a major challenge in Abaqulusi, the risk of HIV infection remains high, especially among women and infants, and access to health facilities is limited.

”

CHILD AID ABAQULUSI

1,277 Children
Immunised

494 Learners
Are aware of sexual issues

ELIMINATION OF MALARIA IN MPUMALANGA AND LIMPOPO



It is estimated that about 79% of malaria cases in South Africa are imported from the neighbouring countries. Migrants often face obstacles in accessing essential health care and malaria-control services. Research in Mpumalanga and Limpopo has demonstrated that delays in malaria diagnosis and initiating therapy were key contributors to preventable malaria deaths in the two provinces. Border areas are in particular underserved in terms of health services coverage.

In response to these and other challenges, Humana People to People South Africa launched the Malaria Program under the Global Fund E8 initiative. The program provided installation and implementation of Health Service Posts for malaria diagnosis, treatment and surveillance for mobile and underserved populations. The project focuses on migrants and mobile Populations. Resident populations, especially those that travel between areas of different transmission risk, may import malaria into receptive areas.

HPPSA staff tested people at border posts for malaria and have also reached out to primary schools where learners were tested. The program works in partnership with clinics to facilitate treatment of all cases that test positive for malaria. The program has also conducted health campaigns and have collaborated with the Malaria Control Program Team (MCPT). At community level the programme has trained youths

MALARIA PROGRAM

42,884 people
Tested for Malaria

14 Malaria breeding sites
Identified and Neutralized

“ Research in Mpumalanga and Limpopo has demonstrated that delays in malaria diagnosis and initiating therapy were key contributors to preventable malaria deaths in the two provinces. Border areas are in particular underserved in terms of health services coverage. ”

to work as community health workers and trained project staff on malaria vector control to improve their proficiency in discharging their duties in the Malaria Control Program (MCP). Some of the main achievements were:

Identified and neutralized 14 malaria breeding sites. Through such activities malaria breeding is under control and the project is moving closer towards ensuring malaria free communities in the target areas.

Reached out to 2,139 youth with information to enhance their knowledge on malaria control continues to occur further strengthening the project and enhancing sustainability.

HPPSA staff is part of a multi-sectorial coordination and response mechanism to malaria in order to enhance community preparedness to deal with malaria. The project also engaged stakeholders across the border to ensure that malaria infection is under control and cases of malaria importation are minimised.

The malaria surveillance statistics since the program inception in Limpopo Province show that the majority of the people tested negative for malaria. However, there are still relatively high numbers of people testing positive for malaria, especially in Makuya (145), Giyani (78), Messina Border Post (50) and Palaborwa (40).

THE YOUNG WOMEN AND GIRLS PROGRAM

The Young Women and Girls program builds on 2 Soul City concepts: the Soul Buddyz Clubs and the Rise Young Women's Clubs.

The programs aim to provide a comprehensive package of health, education and support services for boys and girls, aged 10-14 years, and health and support services for young women, aged 19-24 years. Furthermore, to strengthen community engagement through dialogue and jamborees.

Humana People to People South Africa was in 2016 selected to implement the program in Zululand, Gert Sibande and Greater Sekhukhune under the Global Fund through NACOSA.

In Sekhukhune, 35 Primary Schools were engaged to form 54 Soul Buddyz Clubs in the schools. A total of 1,362 learners were reached and participated in the Soul Buddyz program of which 494 were males and 868 females. Another

1,243 Soul Buddyz members were reached through Life skills education and arts and cultural activities in form of drama, poetry and choir practice.

The Soul Buddy created an environment for ongoing learning in their respected communities, mobilized children to take responsible action and discussions on life skills relating to HIV, AIDS and other issues affecting them in schools and in the community.

In 2017, the RISE Women's Clubs had 2,079 active members in the three districts.

The young women and girls became a lively and active part of the programs. In addition to themselves becoming more aware of the dangers of HIV and knowing their own HIV status, they contributed widely in actions to raise awareness and offer services to other community members. This boosted their self-confidence and social responsibility and thereby opened up to a new perspective in their lives.



CASE STORY

Meet Merlin Kgatle, a mentor at Humana Youth in Action under Hospital Road Elukwatini in Mpumalanga, and she is currently managing nine clubs. Her work is to mobilise and recruit young women, age 18 to 24 years, to join the Rise Young women's program. 50% of these young women are from disadvantage communities in the area of Chief Albert Luthuli.

One day during her support visit at Nhlazathse she met an 18-year-old girl Mbali Dlamini, and this young lady showed so much interest in the program. Mbali then approached Merlin to know more about the program and told her that she wants to join the program but the challenge is that she could not read or write, because she never went to school and also she did not have an ID.

"I sat down with her and I told her that she must not worry, I will be able to help her, and after that talk she decided to join the Rise young women's club, Hope of Girls." The program is really helping most of the girls in the community, some we find sitting at home with a matric certificate but not knowing where to go to get help and further their studies, but as a mentor I always encourage them to apply for bursaries so that they can be able to continue with their studies. The aim of the program is to keep our youth out of the street, assist them to get jobs and entrepre-

neurial opportunities.

"My challenge was that I didn't know where to start since it was already in February and some of the schooling learning program were already closed but still I did not give up, I went to one of the learning program and I managed to find a space for Mbali."

Mbali is passionate about education as we speak she has joined the Abet learning program which is assisting her on how to read and write, she has gained self-confidence and she now leads her club during meetings. The club members also motivate her a lot, they never look down on her, and because of this she became free and open to her club mate.

The club meet every Thursday sharing ideas, listening to their problems and they encourage each other to go to clinic to check if they are still in good health, play netball and conduct awareness campaign. Since Mbali joined the Rise Young Women Club she now knows about her rights, she is aware of any form of abuse and chronic diseases. She is now helping her young sisters and family at home.

We encourage all young women who are out of school to join the rise young women.

THE YOUNG WOMEN AND GIRLS PROGRAM



Hereby four examples from the program:

"58 Rise Clubs were formed with a membership of 1,449 in the year 2017. The club members supported each other through conducting group discussions on the prevention of new HIV infections, unplanned pregnancies, and promotion of sexual and reproductive health rights."

"Young women encouraged each other on starting income generating activities such as hair salons and garden farming which can help them to earn a living".

"The Project conducted 4 sports events in order to improve the general health, social life and fitness of the young women and girls. A total number of 131 people from Rise Clubs and the community participated in the sports event which was aligned with the Health Calendar to commemorate the day of the African Child. "

"Rise members identified 76 orphan girls in need of sanitary pads and one of the mentors was able to do partnership with a local newspaper known as Photograph to provide girls with sanitary pads. 96 packs were distributed to the beneficiaries."

YOUNG WOMEN AND GIRLS PROGRAM

54 Soul Buddyz-Clubs

with 6,111 Members

58 Young Women's Clubs

with 1,449 Members

“ In some countries, women face significant barriers to accessing healthcare services. These barriers occur at the individual, inter-personal, community and societal levels. ”



PRE-SCHOOLS OF THE FUTURE - POF

In South Africa, only 68% of preschool aged children actually attend early childhood development activities. This means that over half of preschool children are not accessing ECD education, and it is mostly children from socio-economically deprived areas that are losing out on this important foundation of their education and development. Humana People to People South Africa has embarked on a wide-scale campaign (movement) to galvanise poor communities into actions designed to improve preschools and ECD education in their areas. The aim is to work with parents, government, other NGOs and communities as a whole to develop a comprehensive system that allows children to access pre-school education.

PRE-SCHOOLS OF THE FUTURE TEACHER TRAINING

The program has two arms: one to train pre-school teachers, the other to start pre-school centres in poor communities.

The Federation Humana People to People has many years' experience in training primary school teachers in countries in Southern Africa. Based on this experience the concept of Pre-schools of the Future (POF) was born. These are schools for early childhood education centres, which takes a holistic approach to child development and combine theoretical learning with practical experiences and actions.

POF TEACHER TRAINING

12 teachers
trained

71 pre-school teachers
in short courses

15 pre-schools
assisted to register with SD

In order to get the concept right from the start, Humana People to People developed a teacher training program that would equip teachers with the skills to start up and run POF centres for young children. Currently this training is carried out by the Kwazulu-Natal Experimental College in partnership with Humana People to People South Africa and is recognized under SETA. The trained teachers would then after graduation either start their own POF centres or use their skills in existing ECD centres.

The first team of students embarked in 2014 and so far 33 pre-school teachers have finished the training.



PRE-SCHOOLS OF THE FUTURE IN KWAZULU-NATAL PROVINCES

Statement from parent:

"I would like to thank HPPSA for bringing the pre-school to us. What I can say is that there is a big difference with my child compared to when she stayed at home.

She has learnt so many things; the days of the week, the alphabet, the months of the year. When she starts in primary school, she will not have a problem, as she now knows so many things happening around her."



Two years ago HPPSA, started its first POF school in Mangangeni, eThekweni.

After some years of running at a low budget with support from parents' fees and HPPSA, the school has now been registered with Department of Social Development and is in the process of being registered with Department of Education.

The POF Mangangeni has in 2017 had 25 children who have benefitted from the POF program and methodology, where children learn to use both their brains and body. The weekly program at a POF consists of elements such as "Use your brain", "Monthly topics and themes", "Use your body", and "Use your imagination", and takes point of departure in the reality in which the child grows up.

POF Mangangeni is working with 12 satel-

POF **MANGANGENI**

25 children

Enrolled and active

12 satellite
pre-schools

Supported

1,345 parents

Benefited from

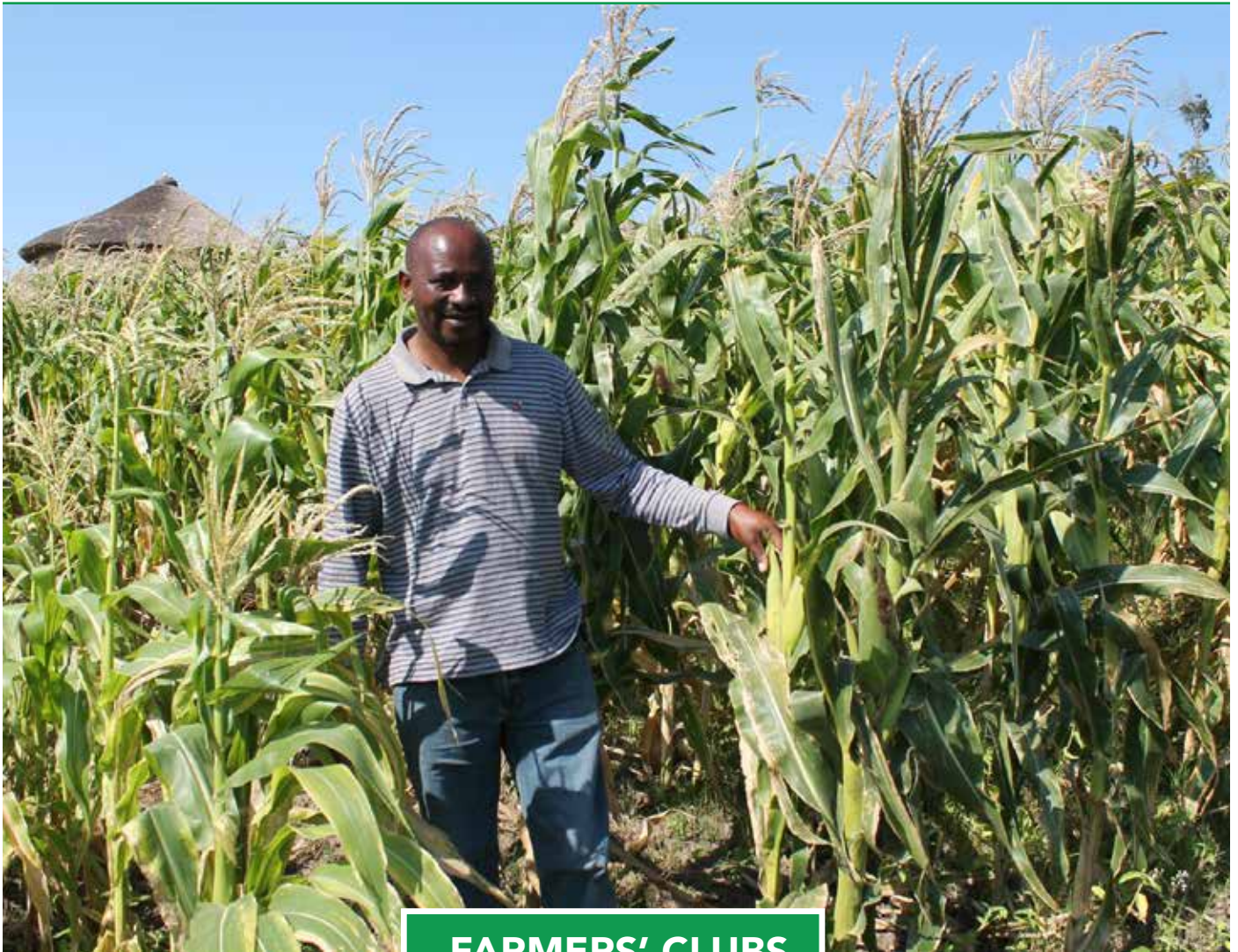
POF campaigns

lite pre-schools, which benefit from sharing ideas to improve their own schools. Parents have also been involved in planning and actions to improve the facilities at the schools. The headmasters are participating in monthly meetings with Department of Social Development to share experiences and get support.

In 2017, Humana People to People in South Africa signed a contract with the Government of Monaco to start 2 POF schools in Ndwedwe and Maphumulo in iLembe District.

During this year, preparations have been made for the POF schools to start in January 2018. They will be located in existing pre-schools, and the staff from these schools will be trained at Kwazulu-Natal Experimental College in the POF program and methodology.

FARMERS' CLUBS - ELLIOTDALE, EASTERN CAPE



In 2012, Humana People to People South Africa (HPPSA) introduced the Farmers' Clubs Program, an initiative designed to uplift the standard of living of small-scale and subsistence farmers' in the Eastern Cape Province.

500 small scale farmers were part of the program from the start and ended their program in 2016. However, as funding was made available by Ackerman's Foundation, 100 farmers were invited to continue in an 8 months' program which especially focused on crops for sale.

In 10 training sessions, farmers were trained on commercial gardens and processing ground nuts to peanut

FARMERS' CLUBS ELLIOTDALE

388 farmers

Practicing Crop Rotation

325 farmers

Planting 2 Cash Crops

“

Smallholder agriculture in South Africa has been identified as the vehicle through which the goals of poverty reduction and rural development can be achieved. South Africa's National Development Plan (NDP) has assigned smallholder agriculture, to drive development in rural areas and to improve the livelihoods of at least 370 000 people.

”

butter. The farmers further got training on how to manage vegetables grown on the card boxes. Staff from First National Bank also held training sessions on finance management.

Gradually, the farmers adopted better good agricultural practices and achieved better-quality produce while preserving the environment and reducing pressure on limited natural resources. 100 farmers were trained and the practices were soon spread among neighboring farmers.

The program ended in September 2017. During last part of the program, the small farmers were encouraged to keep their club structures and support each other.

CASE STORY: HELPING WOMEN BECOME FARMERS



Mrs. Mhlakulwana used to be a subsistence farmer, who was farming to provide food for her family. Her passion for farming started at a very young age. She always wanted to be a farmer and she started helping other farmers, showing them how to grow their own gardens. When she was introduced to Farmers' Clubs, her passion grew even bigger.

Mrs. Mhlakulwana now has a nursery that produces seedlings and sells the produce to other farmers. She has grown from subsistence farming to commercial farming.

She is always encouraging the youth to become farmers. She believes that farming does not only improve young people's lives but it is also a way for them to improve their own and families' economy.

The Farmers' Clubs program has helped Mrs. Mhlakulwana to reach her dreams because now she can provide for her family. Her children can now go to school with the money she makes by selling vegetables and fruit.

The community now has seen the light and many families are now making a living through farming. Also the number of unemployed people in the area has decreased.

PRESENTING OUR PARTNERS



Humana People to People in South Africa partnered with Discovery Fund in July 2015. This Partnership which was initially entered in the year 2011 has an overall objective of strengthening the HIV and AIDS outreach activities that target women of child bearing age. All pregnant women are mobilised and encouraged to go for ANC services during the early stages of pregnancy at local health facilities and provided with after service support. The program further refers the women reached to take an HIV test as part of their ANC visits, those who test HIV positive are immediately enrolled in the PMTCT program.



USAID's Communities Forward - Comprehensive Community-based HIV Prevention, Counseling and Testing Program for Reduced HIV incidence (CBCT) with the goal to expand high quality community-based HIV Counseling and Testing (CBCT) and effective linkage and referral systems in order to increase knowledge of HIV status, as well as access to appropriate and effective HIV and TB prevention, care and treatment services in high incident communities and key populations in South Africa.



The HCI Foundation is an independent trust, controlled by its trustees who include members of the HCI Board of Directors, employees from subsidiary companies of HCI, and independent experts who are able to add value to the specific areas of the Foundation's work. HCI partnered with Humana People to People in South Africa to continue supporting more orphans and vulnerable children (OVC) and youth (infected/affected by HIV/AIDS) in the Bushbuckridge Local Municipality (Ehlanzeni District) of the Mpumalanga Province to gain skills and capacities that will empower them to improve their education, their lifestyle, their skills and lead to improved opportunities for them.



Planet Aid is a member of the Humana People to People Federation. Planet Aid's primary activity is the collection of clothing and other items through donation bins in public places. Planet Aid partners with local businesses and other organizations to place bins on their property, with an aim to make donation more convenient and thus increase recycling rates.



Humana People to People in South Africa Partnered with the Department of Social Development to offer good Early Childhood Education through its own model preschool as well as satellites in the Doornkop and Slovoville areas as well as supporting satellite preschools.



Humana People to People in South Africa signed an agreement with Department of Health under the name Humana People to People-HCT for Child Aid Doornkop.

The project is to reduce the incidence of HIV/AIDS and TB and the suffering it causes among the people of Soweto by reaching up to 63,000 people with information, education, counselling, support and care. The focus will be two fold;

1. Mobilize communities to access HIV & TB services (HCT, PMTCT, Family planning).
2. Provide community counselling and testing services at 3 sites (Doornkop, Dobsnpoint and Slovoville).



The Foundation for Professional Development (Pty) Ltd [FPD] was established in 1997 by the South African Medical Association (SAMA). In 2000, FPD was registered as a separate legal entity (Registration Number: 2000/002641/07). The South African Medical Association, a non-profit company, has a 90% shareholding, while the remainder of the shares are employee-owned. FPD and Humana People to People in South Africa entered into a very successful partnership on the sub-mission of USAID proposals. To date the collaboration has been successful on the "Comprehensive Community Based HIV Prevention, Counselling and "Testing" project.



Humana People to People in South Africa has partnered with other members of The Federation of Associations connected to the International Humana People to People Movement. Humana Austria, Planet Aid and Humana People to People Eastern Holdings supporting Child Aid, Farmers' Clubs, POF and Project support.



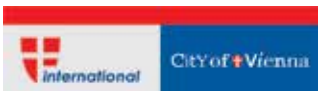
Department of Health in Limpopo Partnered with Humana People to People in South Africa to secure a more supportive environment for the terminally ill through organized training for community volunteers on home based care.



The partnership between Humana People to People in South Africa and National Department of Health is premised on the following objectives: (1) Social Mobilization targeting truck drivers and sex workers along N2 road (2) Influence attitudes and traditions to fight stigma and discrimination of People Living with HIV and TB, harmful gender norms and gender-based violence. The intervention is implemented through Humana People to People in South Africa's HOPE Humana Program in Mopani, Bushbuckridge and Zululand. Activities are focused on two of the population segments that are among the most vulnerable to HIV infection - sex workers and truck drivers.



The Foundation for Human Rights is a grant making institution supporting civil society organisations in South Africa and the region that implement programmes which promote and protect human rights. Humana People to People in South Africa through the Child Aid Tubatse was partnered with Foundation for Human Rights to implement a program aimed at enhancing food security and nutrition that embraces land conservation.



Embracing Innovation and Technology by and for Youths. Building Young Women Competencies and Skills to Become Informed, Healthy and Productive Citizens



The Global Fund to Fight AIDS, Tuberculosis and Malaria (or the Global Fund) is an international financing organization that aims to attract and disburse additional resources to prevent and treat HIV and AIDS, tuberculosis and malaria. Humana People to People South Africa is funded by The Global Fund through a consortium with NACOSA for the implementation of the Rise Clubs Young Women and Girls program and the Soul Buddyz Clubs program. RISE Young Women and Girls club is a Soul City initiative, running under Humana Young Women and Girls Pro-

gram The program is aimed at mobilising young women to participate in taking responsible action to shape their lives and the communities they live in.



FHI 360 is a nonprofit human development organization dedicated to improving lives in lasting ways by advancing integrated, locally driven solutions. Humana People to People South Africa partnered with FHI 360 to implement the Supportive Referral Initiative, a 18 months USAID funded program to provide HIV testing services to 565 000 orphans and vulnerable children (OVCs) along with their family members. FHI 360 has also partnered Humana People to People South Africa with the DREAMS program which aims to empower Adolescent Girls and Young Women Girls to prevent HIV through HIV Testing Services (HTS) and Condom Promotion and Provision.



HIVSA is a not for profit company which was established in 2002. HIVSA empowers individuals, community workers and organisations by developing their capacity and resilience to effectively address socio-economic and health issues in the context of high HIV and AIDS burden with the ultimate vision of creating an HIV free generation. HIVSA has partnered with Humana People to People South Africa for the implementation of the DREAMS program in Doornkop through Child Aid Doornkop. The program also aims to mould the young people into future community leaders.



NACOSA is a network of over 1,500 civil society organisations working together to turn the tide on HIV, AIDS and TB in Southern Africa. NACOSA is a principal recipient of funds from The Global Fund. Humana People to People South Africa has partnered with NACOSA in the implementation of 3 programs: 1. Sex Worker program which offers a comprehensive package of services that are peer-led, clinical and holistic according to sex worker needs. 2. Soul Buddyz clubs for young people age 10-14 and a parenting programme for their caregivers. 3. Rise Clubs for young women out of school aged 19-24 offering life skills and empowerment activities.



transmission intensity varies significantly across the E8 countries. Malaria transmission dynamics across the E8 countries are also highly interconnected. The transmission gradient, along with high population movement across borders results in movement of malaria across borders, undermining individual country elimination efforts.

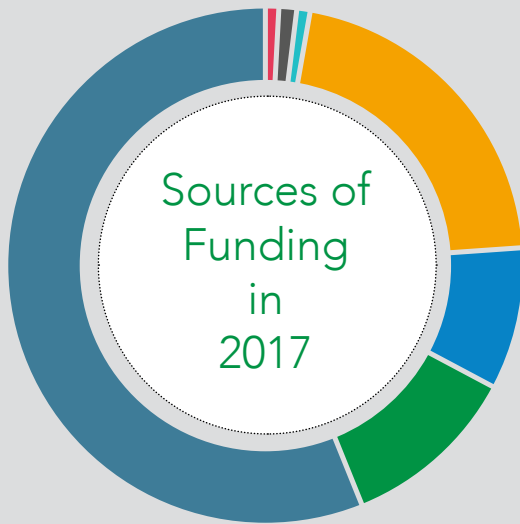


The Nelson Mandela Children's Fund is a charitable organisation founded by Nelson Mandela, based in South Africa. Its mission is to help individuals from birth to age 22, particularly orphans of the AIDS crisis.

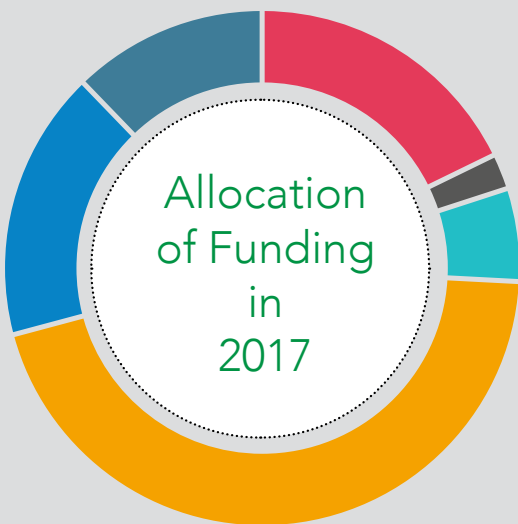
FINANCIAL AND LEGAL INFORMATION

In 2017, Humana People to People South Africa spent approximately ZAR 130 million on our development projects in South Africa. Our major source of funding was generated from our partnerships in development with governments, foundations, companies, organizations and multilateral grant mechanisms for specific programs, projects and activities of common interest.

As seen from the graph below, a major source of funding also comes from member associations of the Humana People to People Federation.



HPP Federation	[22%]
US Government	[56%]
Other Governments	[9%]
The Global Fund	[11%]
Corporates	[1%]
Other Income	[1%]
SA Government	[1%]



TCE	[45%]
Administration	[12%]
HOPE	[17%]
Child Aid	[18%]
Farmers' Clubs	[1%]
Other Programs incl POF	[6%]

FINANCIAL AND LEGAL INFORMATION

Humana People to People South Africa has policies, guidelines and internal controls in line with international standards to ensure that the funds received are spent only for the purpose intended.

The Financial Administration is based at the organization's National Headquarters in Pinetown, Durban. The organization's finances are administered according to Generally Accepted Accounting Practice as required by the Companies Act. Humana People to People's accounts are audited by Ernst & Young.

PROJECT CONTACTS

Child Aid Abaqulusi

1st Floor Bloemel Center, 121 High Street, Vryheid, 3148;
Tel: +27 86 918 8153; Email: ponciliam@hpp-sa.org

Child Aid Bakenberg

Stand No 10213 Leyden Village, Mokopane,
Tel: +27 82 954 5963; Email: deekayn@hpp-sa.org

Child Aid Doornkop

Stand Number 3206, Block 4, Soweto 1863;
Tel: +27 11 765 1036; Email: jsenyelo@hpp-sa.org

Child Aid Tubatse

2729 Ribacross Lehlaba,
behind Lehlaba Secondary School, Burgersfort, 1150;
Tel: +27 76 699 8582, Email: portiamnisi@hpp-sa.org

Child Aid MVC

Stand no: 1874, Section A, Giyani
Tel: +27 73 889 5759, Email: seabe@hpp-sa.org

Child Aid Enhlanzeni

Phenyo's Villas, Stand number 5/R2/218 Mzinti
Tel: +27 64 229 6576, Email: kingdomc@hpp-sa.org

Farmers' Clubs Elliotdale

Stonedrift Store, P O Box 7, Elliotdale
Tel: +27 78 06 8199, Email: dube.nkosiyabo@hpp-sa.org

PreSchools Of the Indwedwe

Ntaphuka P.O Box 309, Ndwedwe 4342
Tel: +27 63 352 4579; Email: nontobekosenzi@hpp-sa.org

PreSchools Of the Future Mangangeni

5/11 Richmond Road, Pinetown 3610
Tel: +27 82 571 9583; Email: ellen@hpp-sa.org

PreSchools Of the Maphumulo

Kranskop P.O Box 50 3268, Tel: +27 604 142 207;
Email: sikhumbuzomagoso@hpp-sa.org

HOPE Bushbuckridge

P O Box 3098, Hazyview 1242,
Tel: +27 72 687 2920; Email: zanele@hpp-sa.org

HOPE Chief Albert Luthuli

441B Hospital Main Road, Elukwatini 1192,
Tel: +27 72 939 7209; Email: masuku@hpp-sa.org

HOPE Mopani

1701/2/3 Khanimambo Street, Nkowankowa,
Tel: +27 79 978 6818; Email: chiloaned@hpp-sa.org

HOPE Abaqulusi

1st Floor Bloemel Center, 121 High Street, Vryheid, 3148;
Email: olgam@hpp-sa.org; Tel: +27 73 773 8520

HOPE West Rand

Barnetts Building, 55 Ockerse Street, Krugersdorp
Tel: +27 63 305 3354; Email: gracechenge@hpp-sa.org

HOPE Uphongola

B1051 Ncotshane, Pongola 3170;
Email: thulani@hpp-sa.org; Tel: +27 79 747 7095

TCE Buffalo City

16 Brighton Street, Quigley, East London;
Tel: +27 79 505 1179; Email: mphot@hpp-sa.org

TCE City of Johannesburg

674 Tsianda Street, Ciawelo, Soweto 1818,
Tel: +27 78 164 0294; Email: sewelama@hpp-sa.org

TCE City of Tswane

7550 Tamarind Str, Lotus Gardens Pretoria,
Tel: +27 72 614 4046; Email: erniem@hpp-sa.org

TCE eThekweni

8 old main road hillcrest 3610,
Tel: +27 83 514 6972; Email: mogano.le@hpp-sa.org

TCE Gert Sibande 1

20 Steenkamp Secunda 2302,
Tel: +27 79 504 1037; Email: omashego@hpp-sa.org

TCE Gert Sibande 2

Mutual Plain building Office no 110 Ermelo 2350,
Tel: +27 76 971 3076; Email: angel@hpp-sa.org

TCE Mopani

No 28 Peace Street, Tzaneen 0850
Tel: +27 60 324 2201; Email: ndumisom@hpp-sa.org

TCE Nelspruit

42 Ehmke Str, Nelspruit,
Tel: +27 76 014 7855, Email: peterchongo97@hpp-sa.org

TCE OR Tambo

No 78 Idwee str Southrnword Mthata 5099
Tel: +27 76 629 0306; Email: thibi@hpp-sa.org

TCE Pietermaritzburg

2 Manaba House, Jakaranda Road, PMB
Tel: +27 7 288 7805; Email: christinah@hpp-sa.org

TCE DREAMS 1

148a Woodview Phoenix;
Tel: +27 76 816 5044; Email: ramilazi@hpp-sa.org

TCE DREAMS 2

Stnfort Hills, Meyiwa streeR, Court 31 Mngeni;
Tel: +27 76 823 3626; Email: gladys@hpp-sa.org

TCE DREAMS 3

43 Richdens Village, 50-61 Old Main Road, Hillcrest;
Tel: +27 78 175 0541; Email: eliyak@hpp-sa.org

TCE DREAMS 4


5/11 Richmond Road, Pinetown ;
Tel: +27 76 227 0408; Email: alfred@hpp-sa.org


TCE DREAMS 5


11 Dunlen Road, Phoenix;
Tel: +27 72 294 0042; Email: andrewa@hpp-sa.org;

TCE DREAMS 6

2 Manaba House, Jakaranda Road
Tel: +27 71 081 4750; Email: velma@hpp-sa.org;

 HumanaPeople

 @HumanaSA

 HumanaSA1

 www.hpp-sa.org



Humana People to People South Africa

National Headquarters

5/11 Richmond Road,
P O Box 15339 Ashwood 3605
Pinetown,
Tel: +27 31 701 9280,
Fax: +27 31 709 1458
Email: hppsa@hpp-sa.org

National Partnership Office

22 Ontdekkers Road
Witpoortjie
Roodepoort
Tel: +27 11 664 7261
Fax: +27 11 664 7654
Email: partnership@lantic.net